



# RIGGING ADVISORY CIRCULAR

Issue Date: 01 April 1987

RAC No. 602 Rev. A

SUBJECT Para-Flite Reserve 'Safety Stow'

STATUS Recommended

IDENTIFICATION Safety Flyer  
Safety Star  
MT-1,  
MT-2,  
Swift Reserve  
Cirrus Reserve  
MT-1S

BACKGROUND As a result of Para-Flite 'Square Reserve Deployment System Analysis Project', an improved deployment bag closing method has been developed. It has been named the Safety Stow.

The Safety Stow has two advantages over conventional deployment bag retention methods:

(1) It has at least twice the retentive strength of two, three or four conventional locking stows and,

(2) It is much less likely to possibly have bag lock caused by incorrect or sloppy packing.

Because of the Safety Stow's ability to retain the canopy in the deployment bag even under adverse conditions such as very high speeds, or very high snatch forces generated by the combination of high drag pilotchutes and high speeds, and heavy weight reserve canopies, we recommend that the Safety Stow be retrofitted to the following reserve canopies:

Safety Flyer  
Safety Star  
MT-1 & MT-2

The retrofit should be accomplished during the next repack cycle.

Retrofitting of the Safety Stow is optional on the following reserve canopies:

Swift Reserve  
Cirrus Reserve  
MT-1S

MANUFACTURER ADVISORY

Para-Flite Inc., advise that a Safety Stow retrofit kit manufactured to Drawing A 889002 and installed in



# RIGGING ADVISORY CIRCULAR

Issue Date: 01 April 1987

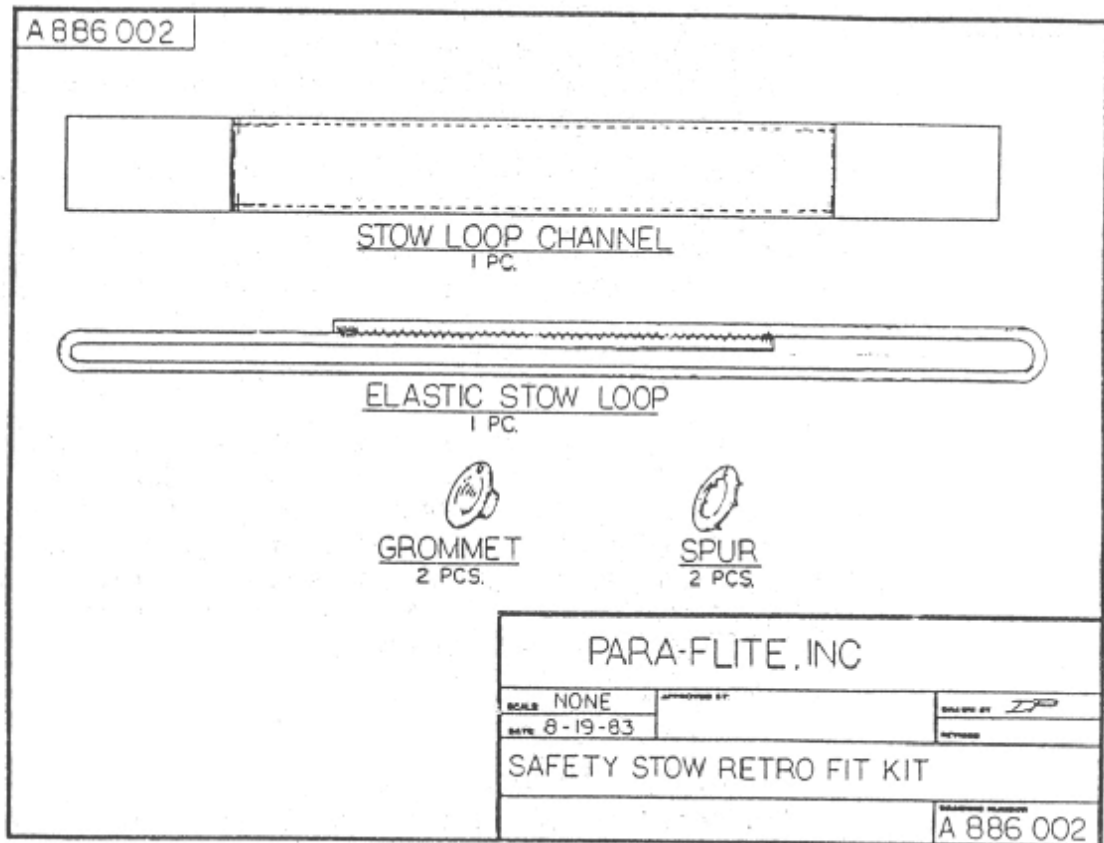
RAC No. 602 Rev. A

accordance with Safety Stow kit installation Drawing b886001 is recommended for the safety Flyer, Safety Star, MT-1, MT-2 and is optional on the swift Reserve, Cirrus Reserve and the MT-1S.

NOTE: Retrofit kits are available free of charge from Para-Flite.

NOTE: These instructions cover only the installation of the elastic loop and the proper procedure for securing the locking stows on the deployment bag.

All other manufacturer's instructions must be complied with.

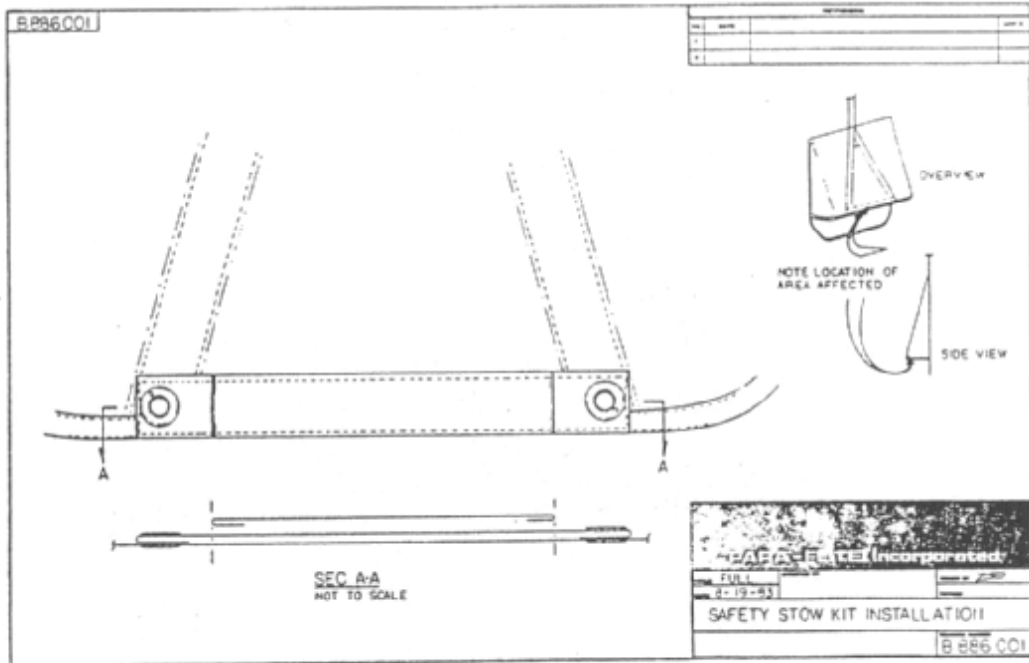




# RIGGING ADVISORY CIRCULAR

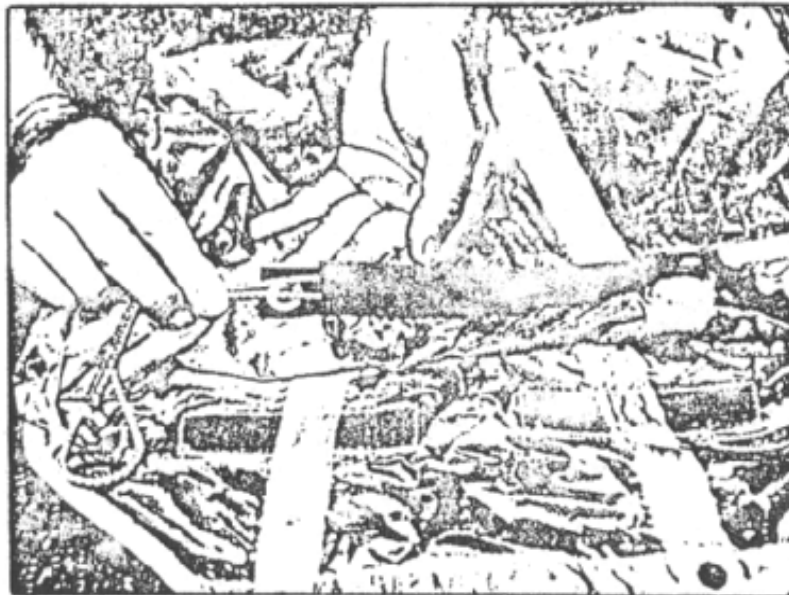
Issue Date: 01 April 1987

RAC No. 602 Rev. A



## INSTALLING THE LOOP

Photo #1



Step 1. Insert the continuous elastic loop through the channel as shown in Photo 1.



# RIGGING ADVISORY CIRCULAR

Issue Date: 01 April 1987

RAC No. 602 Rev. A

Photo #2



PHOTO 2

Step 2. After the loop is inserted, thread each end of the loop through the appropriate grommet as shown in Photos 2 & 3.

Photo #3

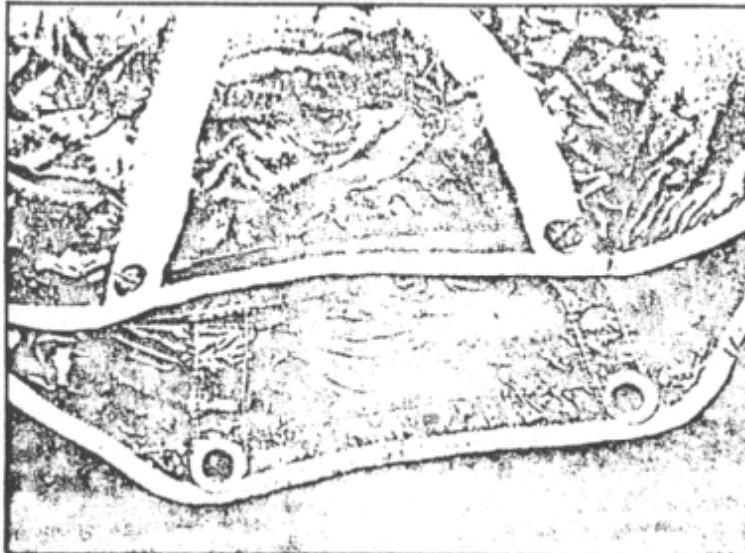


PHOTO 3

**CAUTION: NEVER TACK THE ELASTIC LOOP TO THE DEPLOYMENT BAG OR CHANNEL.**



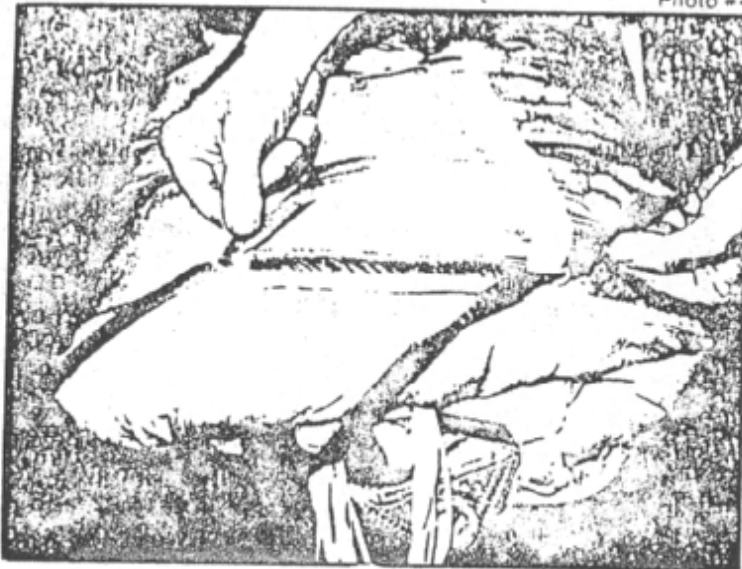
# RIGGING ADVISORY CIRCULAR

Issue Date: 01 April 1987

RAC No. 602 Rev.A

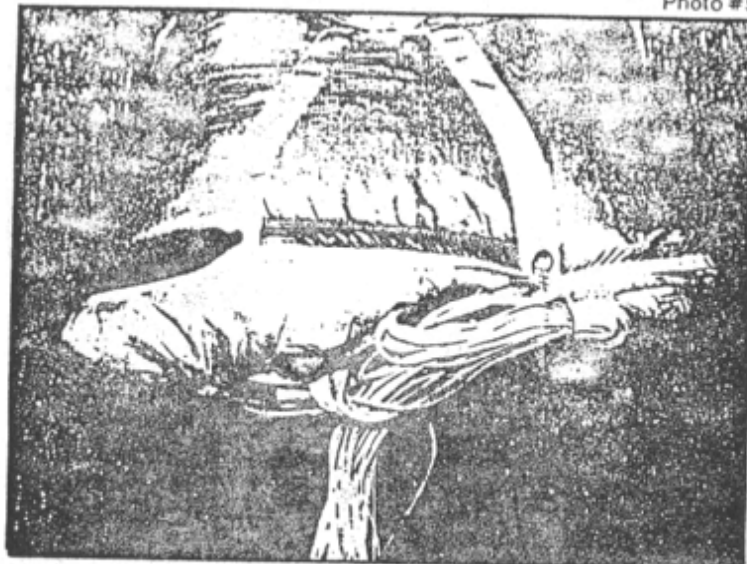
## CLOSING THE BAG

Photo #4



Step 1. Fold the canopy into the deployment bag as per the manufacturer's instructions. Insert a pull-up cord through each end of the elastic loop as shown in Photo 4.

Photo #5



Step 2. Make the first locking stow using the elastic loop in place of the 'O' ring. AS ALWAYS, THE LOCKING STOWS SHOULD NOT BE MORE THAN 1" IN LENGTH. Remove the pull-up cord. See Photo 5.



# RIGGING ADVISORY CIRCULAR

Issue Date: 01 April 1987

RAC No. 602 Rev. A

Photo #6



Step 3. Use the remaining pull-up cord to pull the elastic loop through the grommet as shown in Photo 6.

Photo #7



Step 4. Make the second locking stow as shown in Photo 7. Remove the pull-up cord. **DOUBLE CHECK TO SEE THAT BOTH PULL-UP CORDS HAVE BEEN REMOVED. COUNT THEM!** Continue packing the canopy in accordance with the manufacturer's instructions.



# RIGGING ADVISORY CIRCULAR

Issue Date: 01 April 1987

RAC No. 602 Rev. A

EFFECTIVE DATE September 12 1983

AUTHORITY ELEK PUSKAS, PRESIDENT,  
Para-Flite Inc.,  
5800 Magnolia Ave,  
Pennsauken, New Jersey 08109

PH: (609) 663 1275

DISTRIBUTION All APF Packers  
All APF Riggers