



RIGGING ADVISORY CIRCULAR

Issue Date: 01 November 1994

RAC No. 824 Rev. A

SUBJECT: JUMP SHACK *SST/Racer* RSL RETRO-FIT

STATUS: ADVISORY

IDENTIFICATION: The *SST/Racer* (P/N 13241) pack and harness assembly manufactured by the Jump Shack, DeLand, Florida, USA.

BACKGROUND: The Jump Shack has responded to a request from Australian Riggers to make available a *SST/Racer* RSL Retro-fit Kit'. This RAC contains the installation instructions. Note: RAC 818 provides information on the *Racer/Elite* RSL installation.

JUMP SHACK POLICY: The RSL Retro-fit Kit for the *SST/Racer* (P/N 13241) includes the following parts:

- 1 ea. *SST/Racer* RSL Retro-fit Instructions
- 1 ea. Article - "What you should know about RSLs"
- 1 ea Elastic Housing Keeper. (P/N 13221BK)
- 1 ea. Pair of risers with RSL rings attached. (P/N 1014)
- 1 ea. *SST/Racer* RSL. (P/N 10151)
- 1 ea. Small spool of waxed 5 cord. (P/N 1935)
- 1 ea. RW-3 ring. (P/N 19961)
- 1 ea. 4" long piece off 1" pile Velcro. (P/N 1946P)

Step 1. Remove the reserve canopy from the reserve container.

Step 2. Remove the reserve ripcord housing completely.

Step 3. Take the elastic housing keeper and locate it inside the Type 8 chest strap. Sew the elastic housing keeper to the Type 8 webbing (see Figure 1). Note: If there isn't room to sew the elastic keeper in, the four point may have to be removed and the Tape 8 replaced to make room for the elastic keeper. **This alteration should only be done by certified Master Riggers (APF Rigger B).**

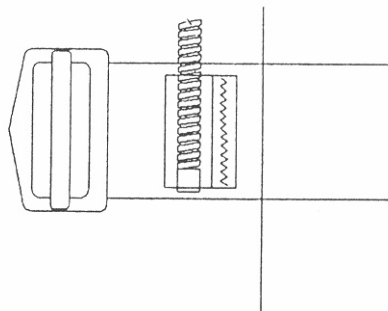


Figure 1.



RIGGING ADVISORY CIRCULAR

Issue Date: 01 November 1994

RAC No. 824 Rev. A

Step 4. Cut velcro to fit on to the reserve container top flap. Sew the 1" pile velcro onto the outside of the reserve container top flap (see Figure 2)

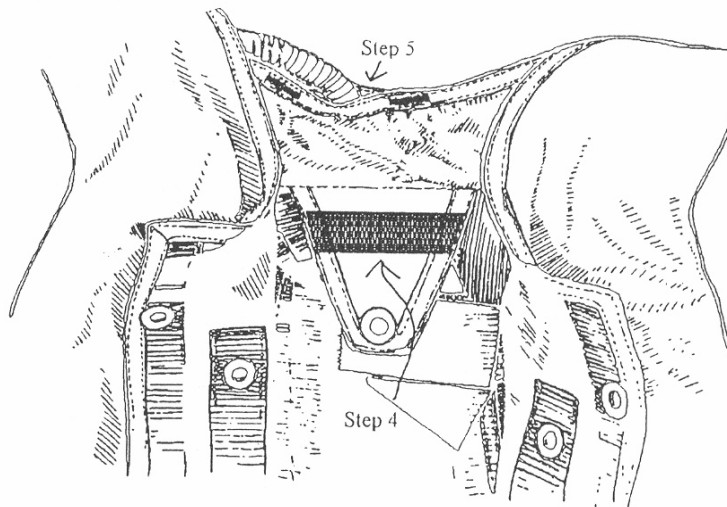


Figure 2.

Step 5. Being very careful, break the stitches between the binding tape at the top of the Type 4 Square Weave (backpad side) & the binding tape on the yoke flap (reserve container side). Leave a big enough space to put the ripcord housing through. Sew (preferably with a zigzag stitch) reinforcements on the binding tape on both sides of the opening that you just made. (Figure 2)

Step 6. Place the reserve ripcord housing in between the backpad & the ripcord pin protection door. Tack the housing down to the backpad with the 5 cord (as it was). (see Figure 3)

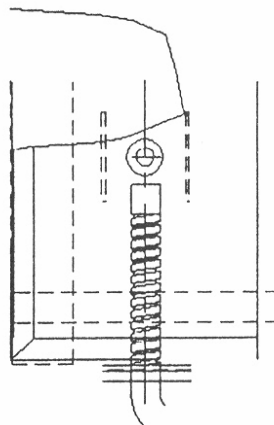


Figure 3.



RIGGING ADVISORY CIRCULAR

Issue Date: 01 November 1994

RAC No. 824 Rev. A

Step 7. Pass one end of the RSL through the RW-3 ring, then route the ring (with the RSL still passed through it) onto the reserve ripcord housing. Route the housing (with the RW-3 ring & RSL on it) under the velcro of the riser cover, and down the outside of the yoke and into the elastic keeper. (see Figure 4) Keep the RSL loose and hanging from the ring on the backpad side of the rig.

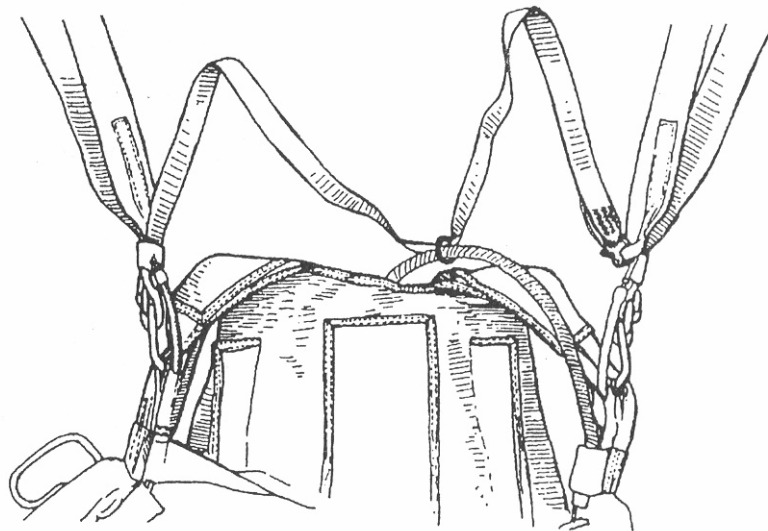


Figure 4.

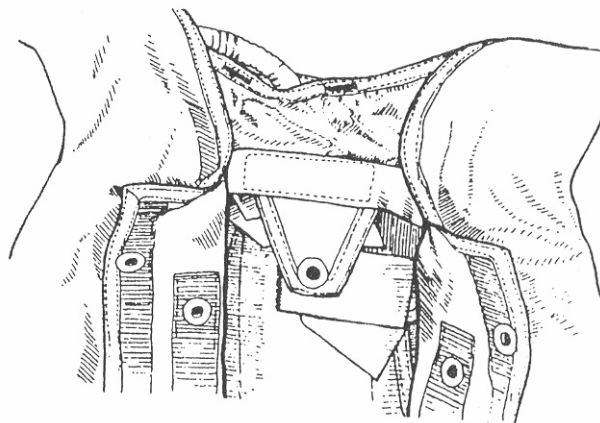


Figure 5.

Step 8. Pack and seal the reserve canopy. Attach the new main risers (with the RSL Rings) and main canopy.



RIGGING ADVISORY CIRCULAR

Issue Date: 01 November 1994

RAC No. 824 Rev. A

Step 9. Route the RSL as follows. **Note: It is very important to follow these directions exactly to avoid routing the RSL under the reserve container top flap.** Take the RSL and mate the velcro with the pile on the reserve top flap, tuck the excess lanyard under the reserve top flap. Be sure that when packing the reserve canopy that the RSL was not routed under the reserve top flap. **DO NOT PASS THE RSL UNDER THE RESERVE RISERS OR THE TOP FLAP OF THE RESERVE CONTAINER.** (see Figure 5 & 6)

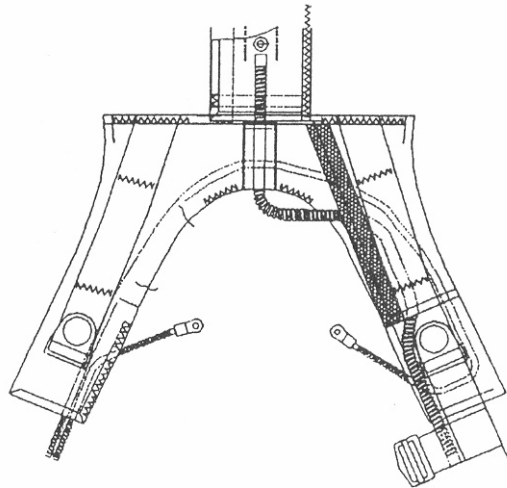


Figure 6.

Step 10. Attach each end of the RSL to the RSL rings on the risers with the snap shackles. (see Figure 7)

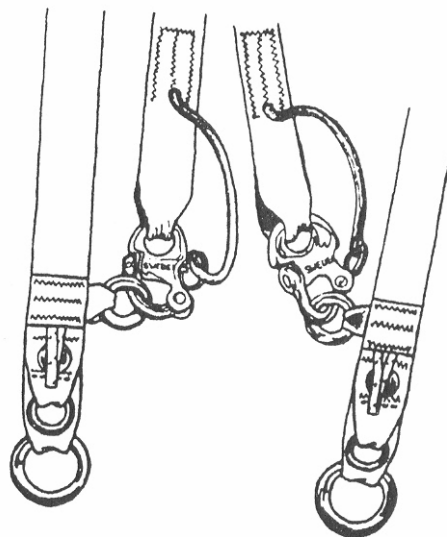


Figure 7



RIGGING ADVISORY CIRCULAR

Issue Date: 01 January 1994

RAC No. 824 Rev. A

Step 11. If you have any questions regarding these instructions or any Jump Shack product, please feel to call, fax or write.

Note: The Jump Shack does allow the RSL to be altered to a "single-sided" RSL at the discretion of the owner. The options are:

Option #1: Route the RSL as described in the preceding instructions.

Option #2: Route the RSL under the reserve ripcord cable housing and loop it so both ends of the RSL connect to the one riser (left or right).

Option #3: Cut the factory RSL in half and attach an RW-3 size ring (*smallest ring of the large 3-ring set*) to the running end of the RSL by three (3) lines of zigzag stitching. Then route the RW-3 ring over the reserve ripcord cable housing and connect the other end to one riser (left or right).

APF POLICY: Where a SST/*Racer* RSL is to be installed, it shall be installed in accordance with the manufacturer's instructions by an APF Rigger. The APF recognises parachutists have the right to incorporate Jump Shack Option #2 and #3 as alternatives to Option #1.

EFFECTIVE DATE: 23 September 1994

AUTHORITY: Beth Sherman, the Jump Shack
1665 N. Lexington Ave.
DeLand, FL 32724-2187 USA
Ph 0011-1 (904) 734-5867
Fax 0015-1-(904) 734-8464

APF Director Rigging

DISTRIBUTION: APF Riggers